



# RFoG 4K over IP Control Center

## USER MANUAL

Version 1.0

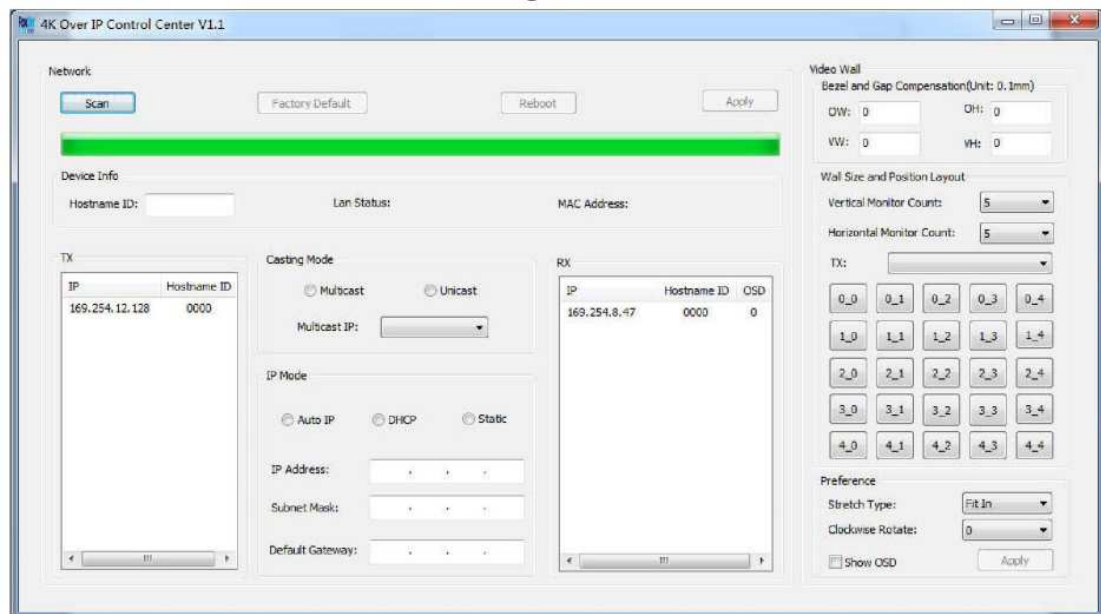
October 2016

# 4K Over IP Control Center

## Network:

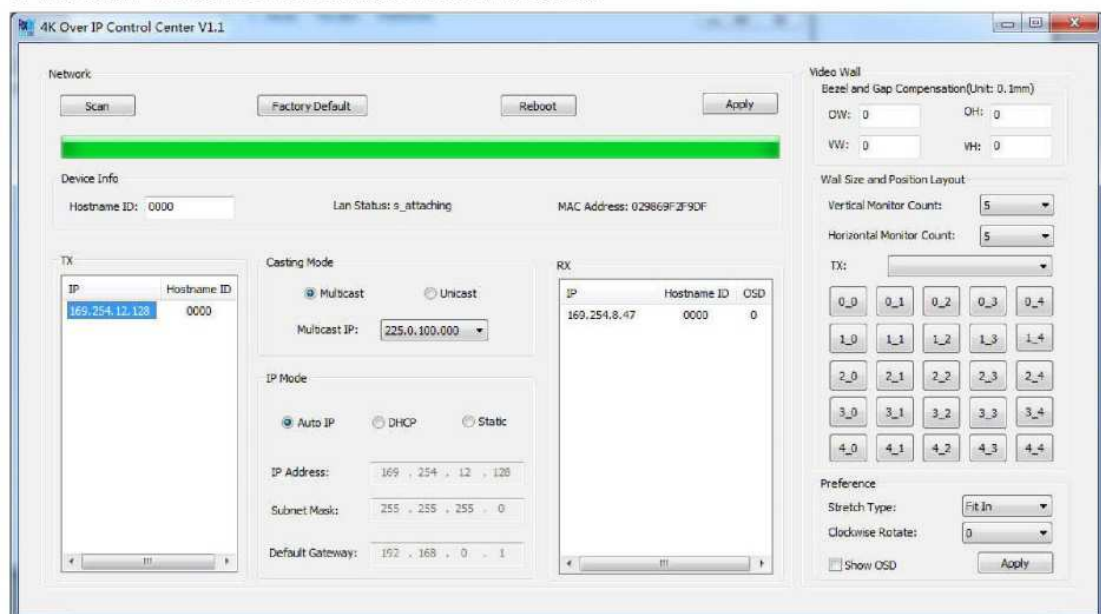
1. Click “Scan” button.

It will scan the devices in the same network segment and list on the list box.



2. Click the IP address which you want to manage.

It will show the device information in a few seconds.



3. Change the configuration that you want to update.

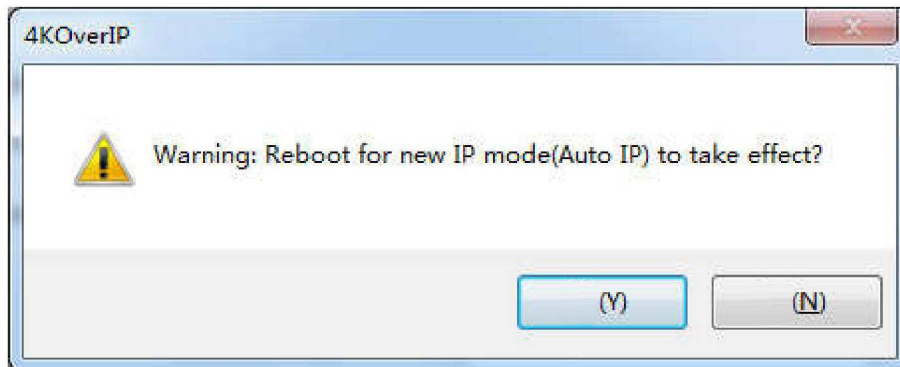
Such as Hostname ID、Casting Mode、Multicast IP、IP Mode

4. Click the “Apply” button.

## 5. You need to reboot the device if you change the IP mode

5.1 Click “Yes” to reboot the device immediately.

5.2 Click “No” that won’t reboot immediately, but it will also take effect by later reboot.



## 6. Reboot

6.1 Click the IP address which you want to reboot.

6.2 Click the “Reboot” button.

## 7. Factory default

7.1 Click the IP address which you want to reboot.

7.2 Click the “Factory Default” button

## Video Wall:

## 8. Set Bezel and Gap Compensation

8.1 Input the size of the monitor used.

OW: Outline Width

OH: Outline Height

VW: Visual Width

VH: Visual Height

8.2 Note that unit is 0.1mm and the value must be **integer**.

8.3 If you don’t need this, just set all values to 0.

## 9. Check “Show OSD”

The index number will show up on each client’s display.

## 10. Set Wall Size and Position Layout

10.1 Set “Vertical Monitor Count” and “Horizontal Monitor Count”

10.2 Select one host

10.3 Drag the IP address which list on the RX list box to the correct position.

## 11. Preference Setting

9.1 Click the IP address

9.2 Change the preference setting. Such as Stretch type、Clockwise Rotate.

9.3 Click the “Apply” button in the Preference group box.